

Disconnect

Configuration information

Procedure	Procedure version	Date changed	Block
Disconnect	2.0	2004-12-09	2

Procedure overview

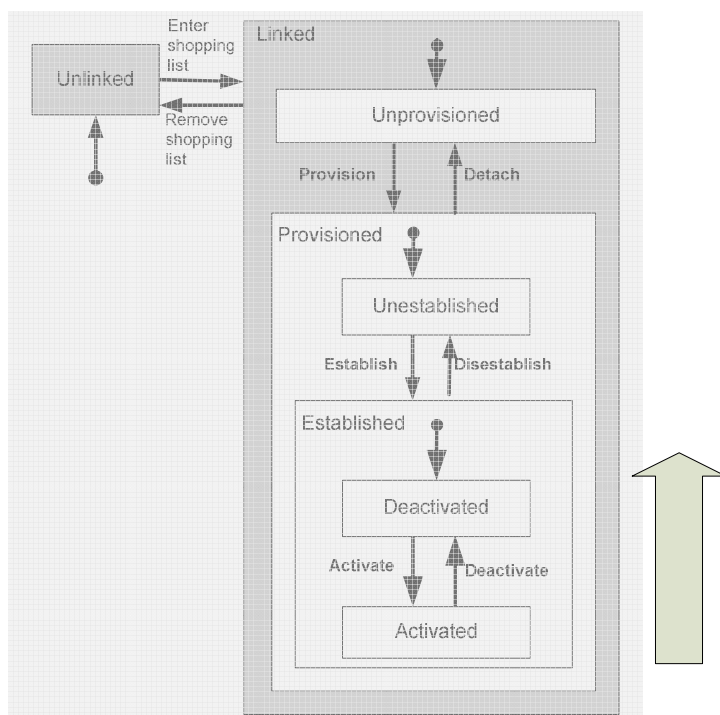
Aim	Disconnect a GW from the MIP network. The GW will restart service after a planned period of time.
Initial state	GW is in an operational state providing service.
End state	GW is in administrative / maintenance state providing no service. GW is storing data created during outage.
Input	GW receives the order to go into a maintenance state from national system controller.
Output	GW sends the MIPSYSMAN DISCONNECT message to all nations it is providing services to stating the time of the planned outage of service, and the planned time of service reconnection.
Estimated effort	

Context

Intended users	Operators / System Administrators
Type of procedure	MOP
Comments	

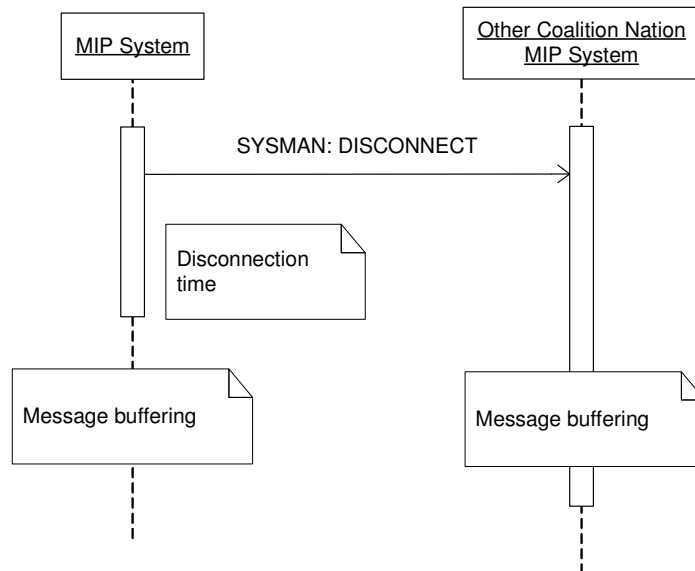
Procedure overview

State context



Disconnect

MEM



Procedure details

1 Disconnect

1.1 Inform all the other connected MIP Gateways

1.1.1 MEM

1.1.1.1 Send the MIPSYSMAN message DISCONNECT

This message contains disconnection time and possible restart time.

1.1.2 DEM

1.1.2.1 Notify all other MIP Gateways on the MIP LAN.

Deactivate node (See procedure 'Manage operational data flow') is performed on the node that is disconnecting. This will automatically notify other connected nodes that this node will not accept any operational data.

1.2 Disconnect GW

Disconnecting the GW involves a controlled shutdown of the GW according to national procedures.

1.3 Store all information generated during the disconnection in the Database

When the operational mode will be restored the new information will be sent. Possibly, it will be necessary to synchronise the Databases.